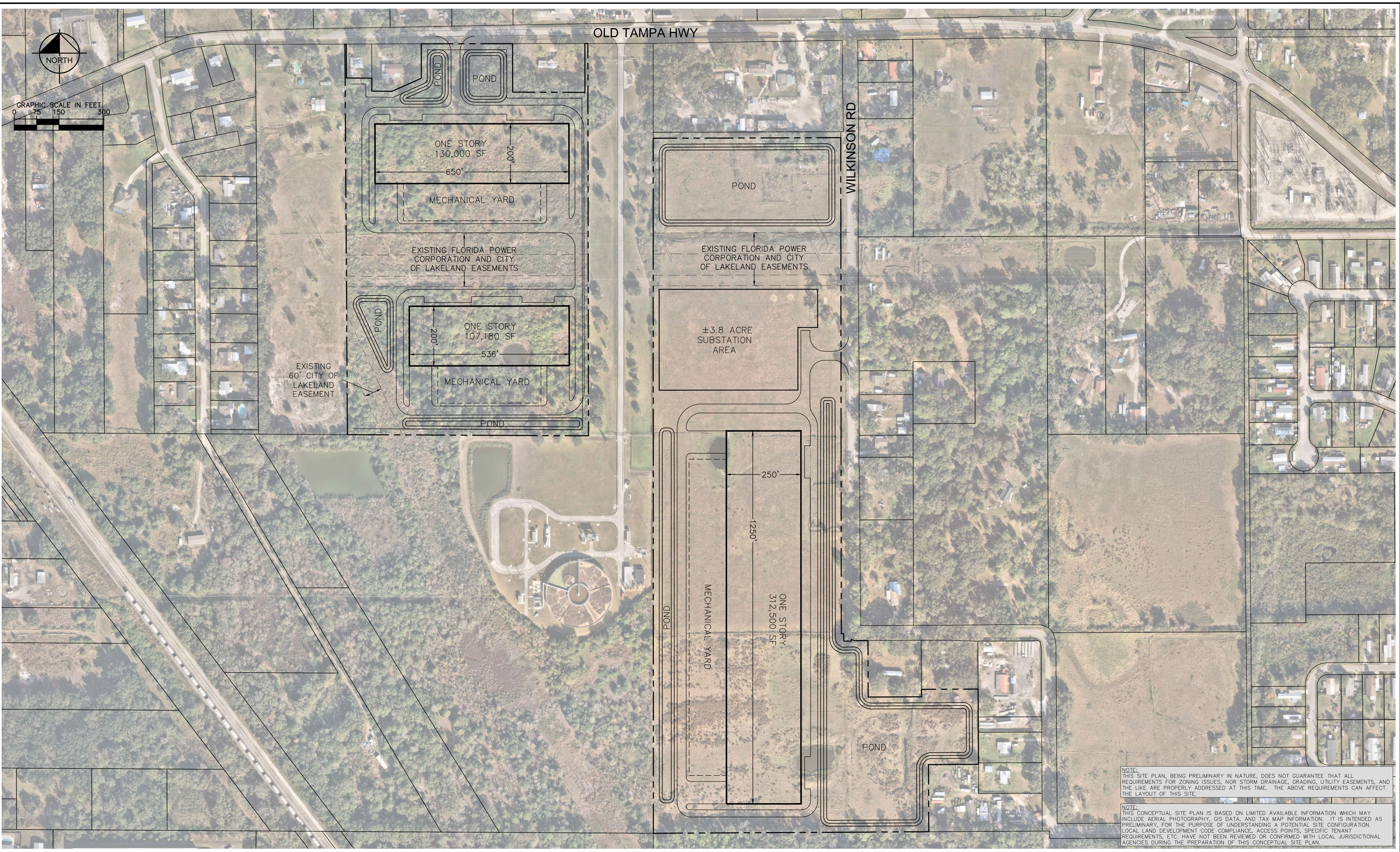


Drawing name: K:\LAK_Civil\046579002 - Project Swan\CAD\Concepts\CSP-1_20260309.dwg exhibit Apr 15, 2026 9:53am by: Briana Reum
This document, together with the concepts and designs presented herein, is intended only for the specific purpose and client for which it was prepared. Reuse of and improper reliance on this document without written authorization and approval by Kimley-Horn and Associates, Inc. shall be without liability to Kimley-Horn and Associates, Inc.



NOTE:
THIS SITE PLAN, BEING PRELIMINARY IN NATURE, DOES NOT GUARANTEE THAT ALL REQUIREMENTS FOR ZONING ISSUES, NOR STORM DRAINAGE, GRADING, UTILITY EASEMENTS, AND THE LIKE ARE PROPERLY ADDRESSED AT THIS TIME. THE ABOVE REQUIREMENTS CAN AFFECT THE LAYOUT OF THIS SITE.

NOTE:
THIS CONCEPTUAL SITE PLAN IS BASED ON LIMITED AVAILABLE INFORMATION WHICH MAY INCLUDE AERIAL PHOTOGRAPHY, GIS DATA, AND TAX MAP INFORMATION. IT IS INTENDED AS PRELIMINARY, FOR THE PURPOSE OF UNDERSTANDING A POTENTIAL SITE CONFIGURATION. LOCAL LAND DEVELOPMENT CODE COMPLIANCE, ACCESS POINTS, SPECIFIC TENANT REQUIREMENTS, ETC. HAVE NOT BEEN REVIEWED OR CONFIRMED WITH LOCAL JURISDICTIONAL AGENCIES DURING THE PREPARATION OF THIS CONCEPTUAL SITE PLAN.